

WS

BIG Y PLAZA

112,000
SQUARE FEET

637 LOWELL STREET
PEABODY, MA 01960



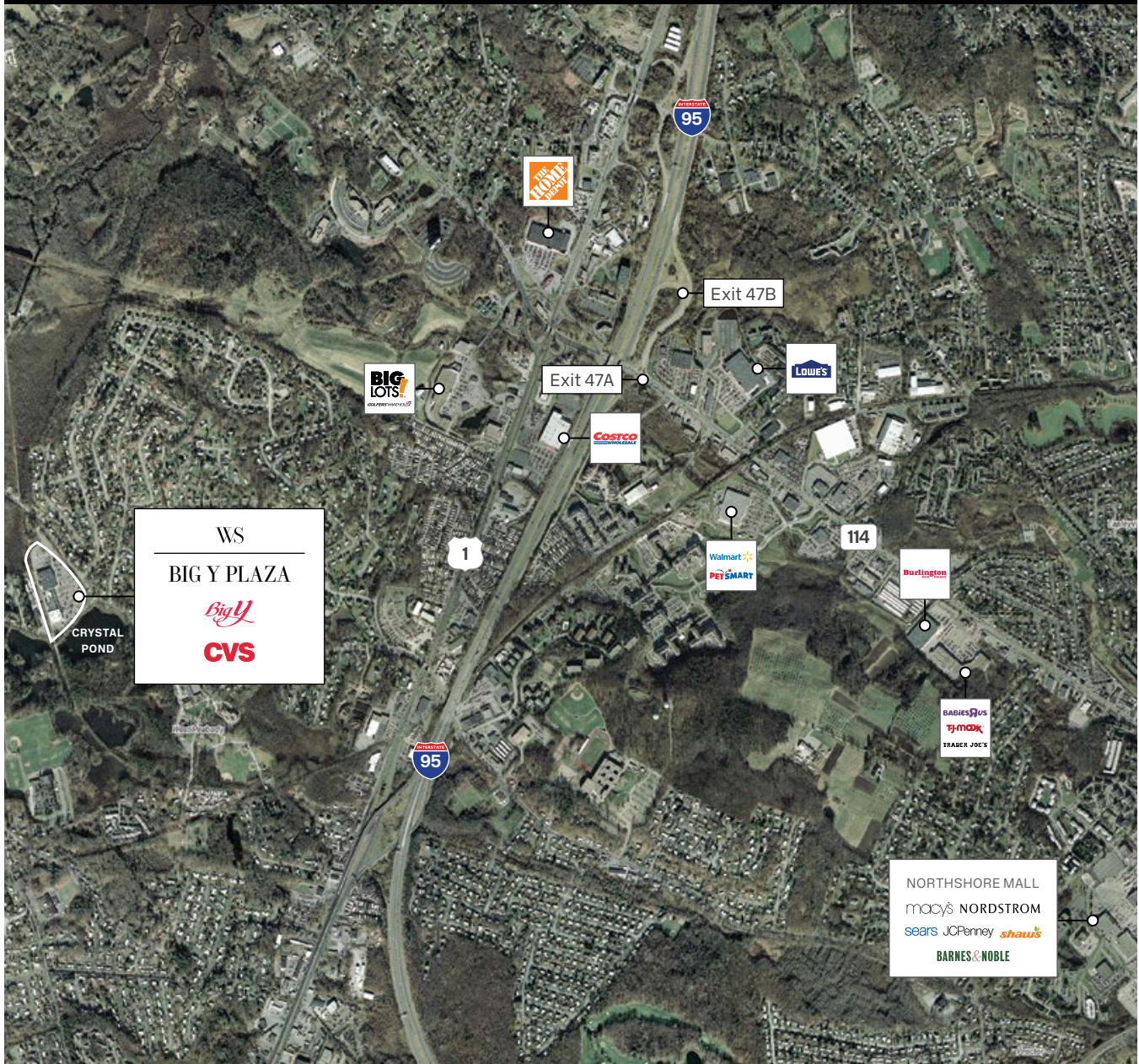
ABOUT THE CENTER

Big Y Plaza delivers a variety of convenient amenities, including a post office, a hair salon, grocery shopping, and apparel. Located near busy Route 1 and Interstate 95, the property serves a primary trade area of several cities—Peabody, West Peabody, and Lynnfield. District residents earn a combined average income of over \$100,000.

The 112,000 square-foot plaza is also home to Big Y and CVS, giving it the feel of a true neighborhood marketplace.



BIG Y PLAZA



PROPERTY FACTS

GLA

112,000 Square Feet

TRAFFIC

Lowell Street 24,895

East of Route 1 25,213

West of Route 1 42,452

PROPERTY FEATURES

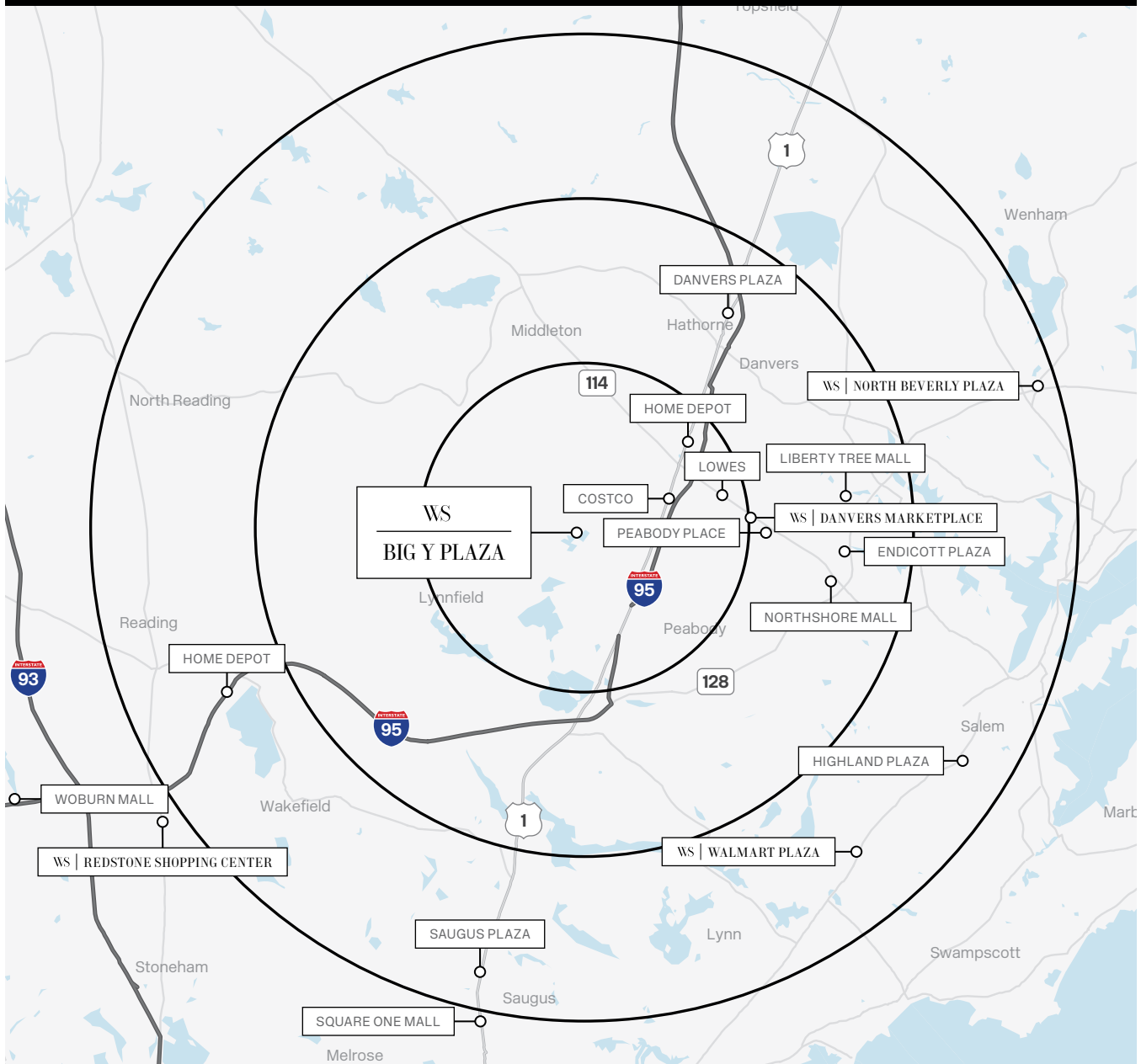
- Affluent customer base: Peabody, West Peabody, and Lynnfield
- Convenient services include a post office, hair salon, and grocery store
- Adjacent to Independence Greenway and Crystal Pond, a newly restored recreational hotspot

KEY TENANTS

Big Y

CVS

DEMOGRAPHICS



DEMOGRAPHICS

	2 MILE RADIUS	4 MILE RADIUS	6 MILE RADIUS
2018 Estimated Population	22,925	93,895	241,397
2018 Estimated Households	9,100	36,374	93,731
2018 Estimated Average Household Income	\$120,119	\$120,949	\$117,024